

A-270/ 350

350 g/ml

40% LANA - WOOL
60% VISCOSA - VISCOSE

1,80 m

45 m

1 mm

TRATAMIENTOS
TREATMENTS

- Hidrófugo - *Water repellent*
- Ignífugo - *Fire resistant*
- Anti-Moho - *Rot proofing*
- Anti-Piling - *Anti pilling*
- Anti-Estático - *Anti static*
- Anti-Manchas - *Stain resistant*
- Anti-Polilla - *Moth proofing*
- Apresto - *Stiffener*
- Anti-Deslizante - *Non-slip*

SOLIDEZ AL FROTE SECO

En todos los colores: Excelente (4-5) (máx. 5)

SOLIDEZ AL FROTE HÚMEDO

UNE-EN ISO 105-x12

en todos los colores: Bien (3-4) (máx. 5)

RUBBING RESISTANCE ON DRY STATE

For all colours: Excellent result (4-5) (max. 5)

RUBBING RESISTANCE ON DAMPED STATE

UNE-EN ISO 105-x12

For all colours: Good result (3-4) (max. 5)

Puede haber pequeñas diferencias
de color entre tinturas

*Possible slight color differences
between dye batches*

RECOMENDACIONES
RECOMMENDATIONS



OEKO TEX



250



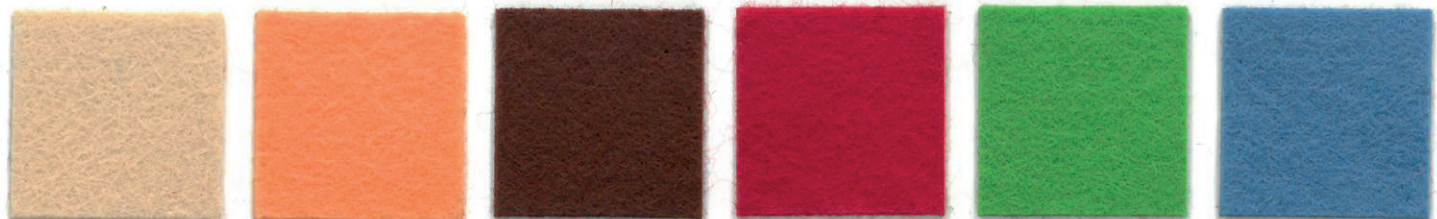
300



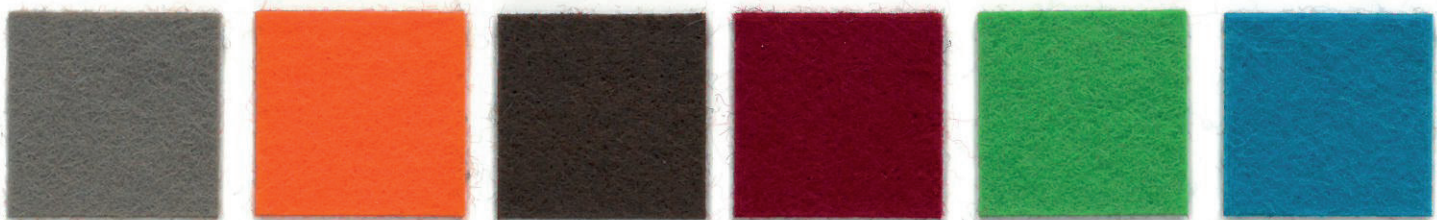
350



201 * 215 ** 223 *** 236 * 235 * 214 *



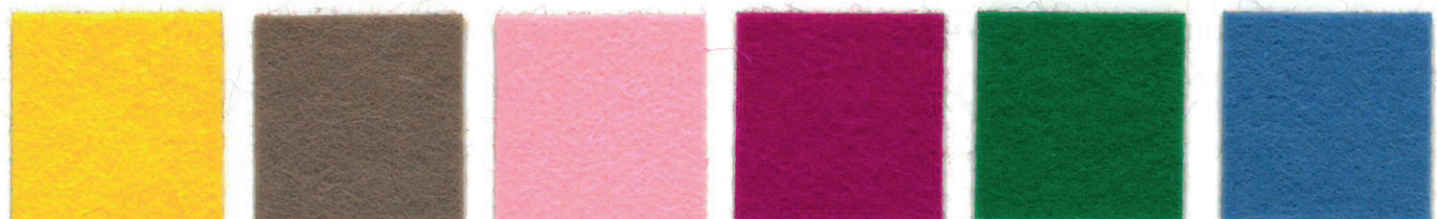
237 ** 216 ** 240 ** 220 ** 209 ** 225 **



243 ** 232 ** 224 ** 233 ** 210 * 231 *



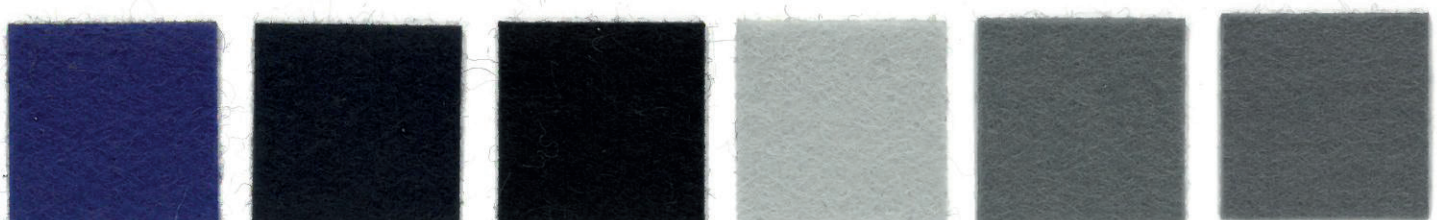
205 ** 208 ** 242 ** 219 * 244 * 229 **



206 ** 238 ** 217 * 221 * 211 * 226 **



207 ** 239 ** 218 * 234 ** 212 * 227 *



228 * 241 ** 204 ** 230 * 202 * 203 *

SOLIDEZ A LA LUZ: UNE-EN ISO 105-B02/OU

* Regular (3-4) ** Buena (5-6) *** Muy buena (7-8) (máx. 8)

Para colores, gramajes, anchos especiales y tratamientos se ruega consultar

COLOUR FASTNESS TO LIGHT: UNE-EN ISO 105-B02/OU

* Regular (3-4) ** Good (5-6) *** Very good (7-8) (max. 8)

For special colours, weights and widths, please ask for information